

USULÜ: 9 ZİHİR

# SUZİDİL PEŞREVİ

RAHAT DEDE

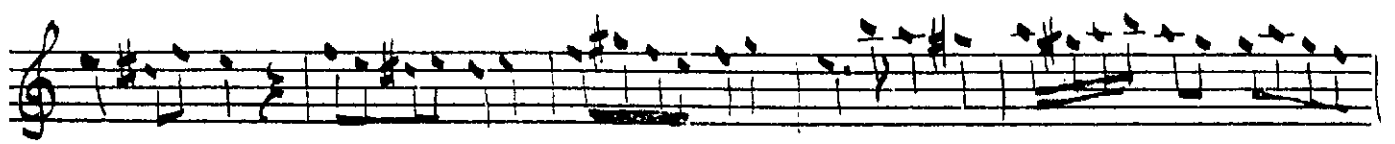
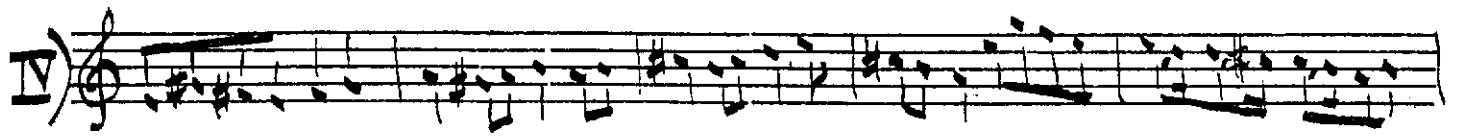
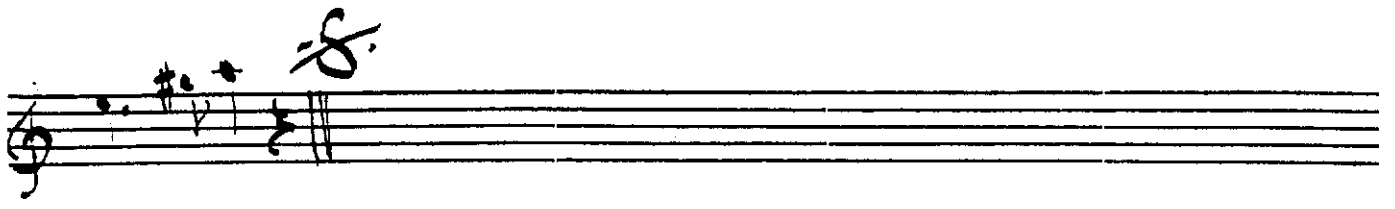
I)



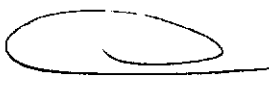
II)



The image displays two staves of handwritten musical notation for the Suzidil Peşrevi. The first staff, labeled 'I)', begins with a treble clef and a common time signature. It contains a series of eighth and sixteenth notes, many of which are beamed together, and includes various accidentals (sharps, flats, and naturals). A circled '8' is visible in the fourth measure of the first staff. The second staff, labeled 'II)', also begins with a treble clef and a common time signature, and continues the melodic line with similar note values and accidentals. The notation is written in a clear, legible hand.



Döğar Ergin'deki eski yazı  
defterden aynı kopya.  
18.1.1975

 Ümmü Kâmil